



**ZACKLIM | SRQ**  
FLAT & LEVEL

[www.zacklim.com](http://www.zacklim.com)



# THE CONCRETE FLAT FLOOR SPECIALIST

Completed over 30 million sq ft of concrete flat floors



# WHO WE ARE

ZACKLIM, a Malaysia-based company with more than 30 years experience in the field of construction, has evolved to become a leading floor specialist. ZACKLIM is well-known for its commitment to deliver outstanding quality concrete floors to clients. Over the years ZACKLIM has gained reputation to becoming one of the most respected floor specialists in the Asian region.

**PT Zacklim Superflat Indonesia**, our first overseas office was established in 2019 to accommodate the overwhelming demand and support of the local clients. Since then, PT Zacklim Superflat Indonesia has grown exponentially to approximately 100 employees to offer full commitment in terms of manpower and resources to its notable clients.

# WHY WE ARE DIFFERENT

The importance of the floor is frequently overlooked, despite the fact that it constitutes the majority part of any building. It is especially crucial to build a high-quality floor to accommodate the advancement of today's sophisticated material-handling equipment.

When embarking on new projects, we often advise our clients on the best floor proposal, ensuring every dollar of their investments count.

We are distinctive for several reasons. These include:

- Aligning to the clients' requirements
- Track record of success
- Technical know-how
- Well-trained team with cutting-edge machineries

# OUR VISION AND MISSION

## VISION

To promote world class concrete flooring we are committed to share & propagating the virtues of best concrete practices to applicators, professionals including contractors who are committed to constructing concrete floors of the highest standards.

## MISSION

To consistently strive to advocate the importance & knowledge of constructing commercial & industrial concrete flooring of world class standard in the Asian region.

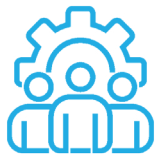


# WHY CHOOSE

## PT ZACKLIM SUPERFLAT INDONESIA?



**Technical support** – With the growing demand of superflat floor, we are always here to support and answer your questions on different types of concrete floor usage.



**Experienced Team** – With the vast experience over the years, our team is highly trained to complete the floor as per your specification.



**Latest technology** – We constantly upgrade our machineries and equipments to keep abreast to the latest technology. Start-of-Art machineries and equipment do make a big difference in achieving a good quality floor!



**Consultancy** – We provide cost effective technical flooring proposal that could prevent you from spending millions in repair works. Every warehouse is different; every floor is unique hence no one proposal fits for all.



**Recognition** – We are honoured to be the 1st Indonesian company to receive the world recognised “Golden Trowel Award Asia” – GOLD CATEGORY [Year 2020]. This prestige recognition reinforced our position to be the leading flat floor specialist and our dedication to continue producing higher standard floors.

# WHAT WE DO?



Driven by commitment for continuous improvement, our team gathers their technical knowledge and experience in delivering high quality work. We have completed extensive projects in different segments, including warehouses, factories, airport hangars, sports centres, cleanroom, cold storage, showrooms etc.

The services we offered are,

- Superflat concrete floor construction
- Steel Fibre Reinforced Concrete (SFRC) floor construction
- Screeding, powerfloating and trowelling works
- Concrete floor polishing
- Existing concrete floor refurbishment
- Superflat floor consultation

*“ Invest in a good quality floor that can save you millions in maintenance and repair work ”*



## Understand the usage of your floor and determine your preferred specification

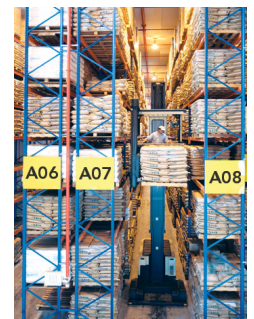
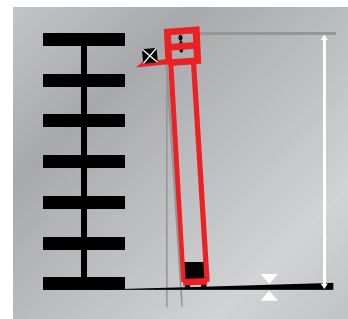
### Types of floor usage

- Random Traffic / Free movement
- Defined Traffic / Defined movement
- Automated Storage & Retrieval System (ASRS)



### Preferred floor specification

- F-number System / F-min
- TR34
- DIN / VDMA
- FEM 9.831

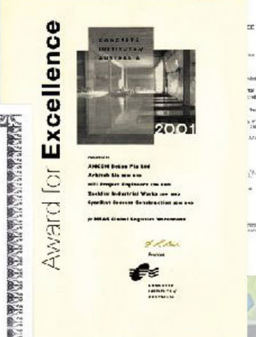


### Benefits of Superflat Floor

- High Efficiency
- Low Vehicle Maintenance
- Low Floor Maintenance
- High Abrasion Resistance
- Dust Free

### Superflat Floor for Warehouse

A floor that achieves a very high standard of flatness and is very conducive for material handling equipment which are required to operate up to 16 meters in height. This is a must for industrial applications e.g. : warehouse and factory where a very high degree of flatness and levelness is required to improve efficiency, reduce maintenance and avoid industrial accidents.



2015 Golden Trowel ASIA Award "FIRST IN ASIA"



2015 Golden Trowel INTERNATIONAL Award



2017 Golden Trowel ASIA Award



2018 Golden Trowel Asia Award



# ACHIEVEMENTS

Since 1989, the Golden Trowel® award is the most prestigious and sought after award in the concrete flooring industry globally. Presented by the FACE USA, the Golden Trowel awards is being given annually in recognition to the industry players who placed the flattest and level floor worldwide.

- 2015 – Gold – Golden Trowel INTERNATIONAL Award
- 2015 – Gold – Golden Trowel ASIA Award [FIRST IN ASIA & MALAYSIA]
- 2017 – Silver – Golden Trowel ASIA Award
- 2018 – Gold – Golden Trowel ASIA Award
- 2020 – Gold – Golden Trowel ASIA Award [FIRST IN INDONESIA]

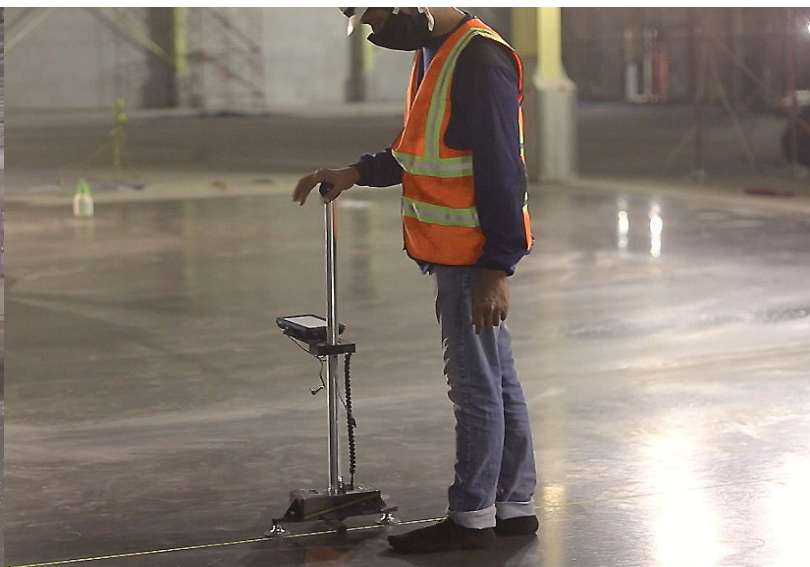




SOMERO® S15 R Laser Screeding Machine



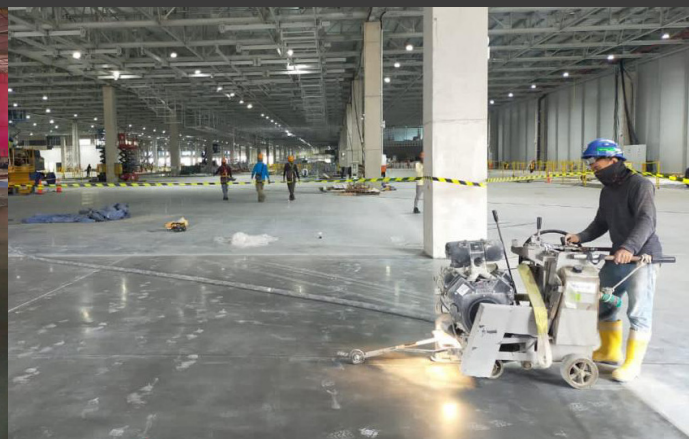
SOMERO® S485 Laser Screeding Machine



Dipstick



Walk-Behind Power Float



Saw Cut Machine

# STATE-OF-THE-ART MACHINERIES AND EQUIPMENT



Ride-On Power Float



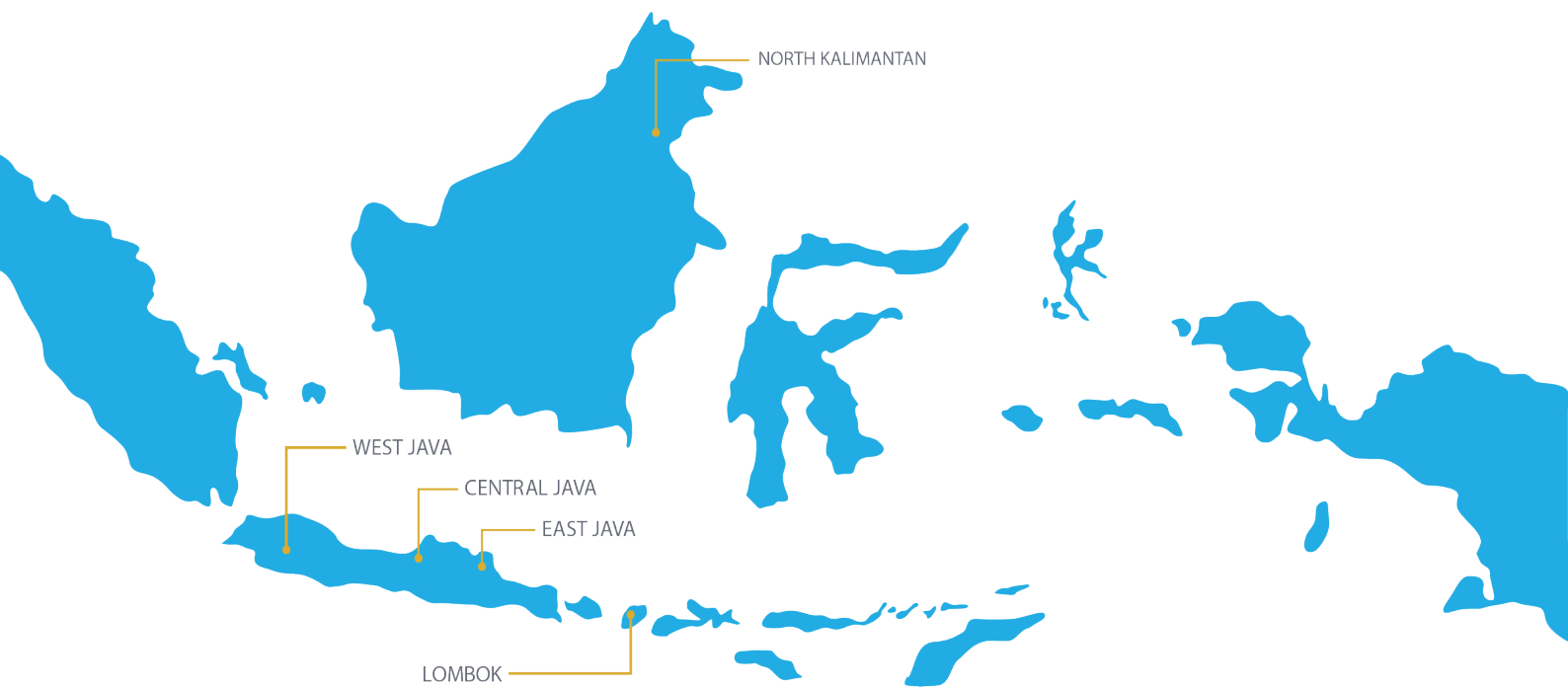
Bump Cutter



Dry Shake Spreader



Truss Screed



# PROJECT REFERENCES INDONESIA

## CENTRAL JAVA

- 2017 - New Warehouse PT. Indo Asia Tirta Manunggal, Semarang FF25 FL20 - 3,200 m<sup>2</sup>
- 2021 - PT Fastrata Buana Warehouse, Semarang - 600 m<sup>2</sup>

## EAST JAVA

- 2016 - Sawmill Factory PT. Nusantara Timber Pratama Factory, Gresik FF25 FL20 - 6,200 m<sup>2</sup>
- 2019 - PT. Fastrata Buana Warehouse, Krian FF35 FL25 - 3,500 m<sup>2</sup> SFRC SLAB ON GROUND
- 2019 - New Warehouse PT. Fastrata Buana, Sidoarjo FF35 FL25 - 6,500 m<sup>2</sup>
- 2019 - PT. Kamadjaja Logistic, Surabaya FF50 FL35 - 12,500 m<sup>2</sup>
- 2020 - Garuda Food TBK Warehouse, Gresik FF50 FL30 - 12,500 m<sup>2</sup>
- 2020 - KTS Balong Bendo Warehouse, Sidoarjo FF35 FL25 - 5,000 m<sup>2</sup> SFRC SLAB ON GROUND
- 2021 - Warehouse Akses PT Kebomas Makmur, Gresik FF35 FL25 - 6,400 m<sup>2</sup> SFRC SLAB ON GROUND
- 2021 - Cold Storage, Krian FM3 - 5,500 m<sup>2</sup> SFRC SLAB ON GROUND
- 2022 - Suncity Warehouse, Sidoarjo FF35 FL25 - 3,500 m<sup>2</sup> SFRC SLAB ON PILE

## WEST JAVA

- 2020 - Hyundai Motor Manufacturing Indonesia, Bekasi FM3 - 39,000 m<sup>2</sup>
- 2020 - Data Center, Cikarang FF40 FL35 - 1,000 m<sup>2</sup>
- 2020 - Data Center, Cikarang FF40 FL35 - 1,000 m<sup>2</sup>
- 2021 - Data Center, Karawang Timur FF35 FL25 - 9,000 m<sup>2</sup>
- 2021 - Kansai Prakasa Coating New Feng Tang 20, Tangerang FF75 FL35 - 4,500 m<sup>2</sup>
- 2022 - Depok Logistic Property, Depok FF35 FL25 - 76,650 m<sup>2</sup>
- 2022 - Rich Valey Indonesia, Bandung FF35 FL25 - 42,000 m<sup>2</sup>
- 2022 - Data Center, Karawang FF35 FL25 - 14,000 m<sup>2</sup>

## NORTH KALIMANTAN

- 2021 - Kayan LNG Train Project - 1,000 m<sup>2</sup>

## LOMBOK

- 2022 - American Pillo Lombok - 2,500 m<sup>2</sup>

# TESTIMONIALS

**Company** : PT Total Persada Indonesia  
**Name** : Daniel Sutedja S.T., M.EngSc.  
**Title** : Director

“It has been exciting and fruitful experience shared by PT Zacklim a lot of knowledge regarding flat floor method and reducing concrete crack. At the construction phase, PT Zacklim has shown strong commitment to achieve high quality flat floor, ontime delivery and cost efficiency.”

**Company** : PT Indo Asia Tirta Manunggal  
**Name** : Hanjaya Kurniawan  
**Title** : Director

“Kami sangat bangga bisa menggunakan product Flat Floor PT Zacklim, kualitas lantai kuat & rata, cocok dengan kebutuhan gudang kami yang dituntut oleh supplier & customer kami, harus mempunyai gudang yang rapi, bersih serta lantai yang kuat, sangat *recommended*.”

**Company** : PT Karya Terang Sedati  
**Name** : Dennis Lauwardi  
**Title** : Director

“We are fortunate to be introduced to PT Zacklim during our building planning phase, because they offer the exact flooring specifications that we need for our production and storage facility. They use cutting edge technology for flat floor construction which incorporates the best material and method to deliver the best quality according to international standards.”

**Company** : PT Indo Purnama Investama  
**Name** : Chandra Deddy Purnama  
**Title** : Founder

“Zacklim Superflat Indonesia in Surabaya has exceeded our expectation in overall result. The FF and FL result in construction has surpassed and in compliance with the high level racking logistic warehouse standard. We will undoubtly contract with PT Zacklim for future logistic warehouse.”

**Company** : PT Jaya Obayashi  
**Name** : Vicky Tri Wibowo  
**Title** : Site Manager

“I feel satisfied working with PT. Zacklim. They work with professionalism, commitment, and can follow our company regulations well. So far, there have been no failed work results.”

**Company** : PT Wijaya Kusuma Contractor  
**Name** : Budi Susanto  
**Title** : Project Manager

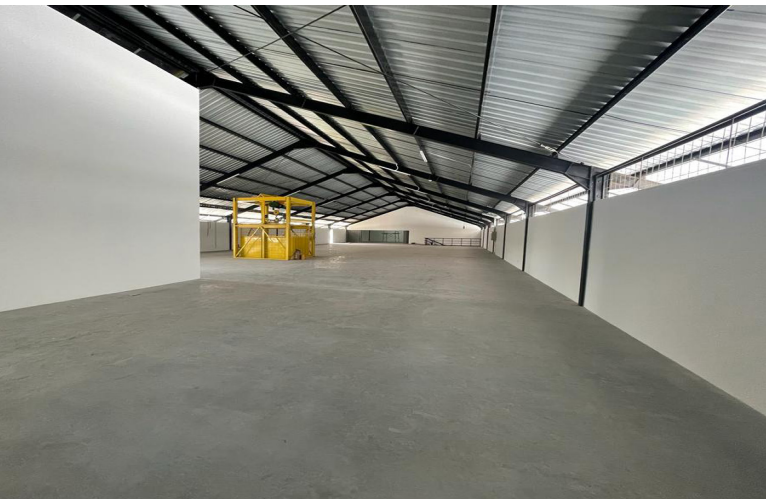
“We highly recommend PT Zacklim, a specialist for concrete flat floor finish, polish concrete finish, they have very good knowledge regarding flat floor concrete, both in theory or practice. So that the results we get are in line with expectations. Their project team has good skills, discipline and good coordination.”

**Company** : Kamadjaja Logistic  
**Name** : Joseph Setiawan  
**Title** : Senior Procurement Manager

“We are very satisfied with the professionalism of PT Graha Putra Persada / PT Zacklim starting with consultancy up to the result which delivered high standard finishing flat floor.”

**Company** : PALI PTP Sdn Bhd, Gelang Patah Johor Darul Takzim, Malaysia  
**Name** : Marvin Lam  
**Title** : Director

“...We thank you for the efficient and professional manner in which the project was managed. The consultancy and technical advises rendered were most valuable. Coupled with your proactive problem solving approaches, the commitment and cooperation made possible a focused outcome to this project. We also acknowledged that the works were completed well within our budget allowance.”



American Pillo, Lombok



PT. Kamadjaja Logistik, Surabaya



Kansai Prakasa Coating New  
Feng Tang 20, Tangerang

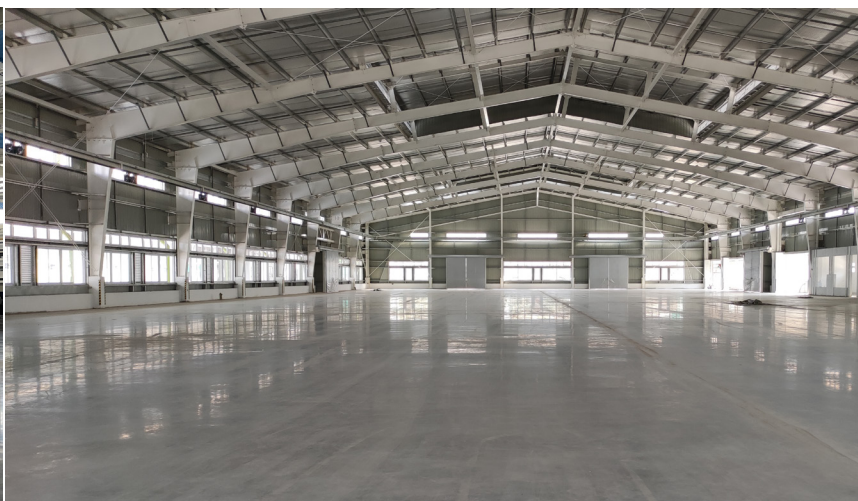


Suncity Warehouse, Sidoarjo

# PROJECT REFERENCES INDONESIA



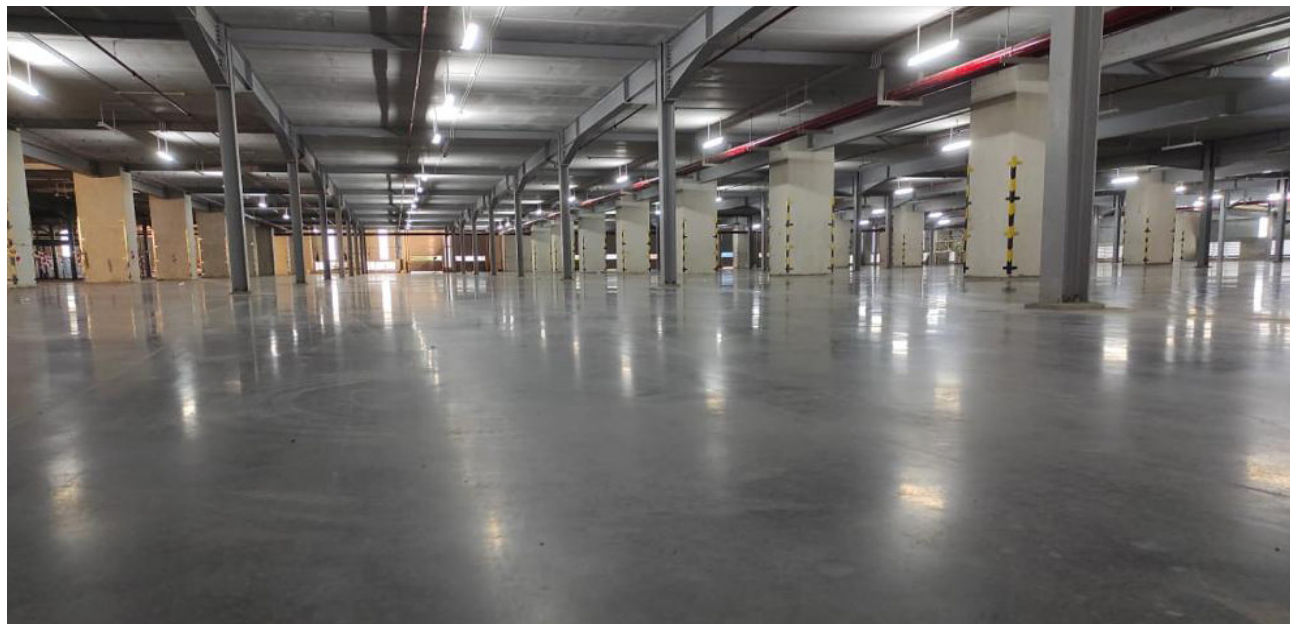
KTS Factory, Sidoarjo



Rich Valley Indonesia, Bandung



Hyundai Motor Manufacturing Indonesia, Bekasi



MMP Pondok Ungu, Bekasi



PT. Indoasia Tirta Manunggal Warehouse, Semarang



GarudaFood TBK Warehouse, Gresik



# PROJECT REFERENCES INDONESIA



PT. Inera Sena (Polygon Factory), Sidoarjo



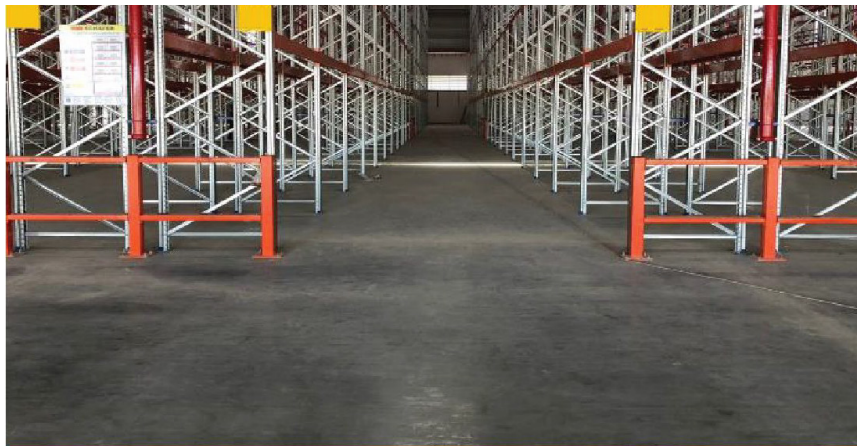
PT. Depok Logistik Properti, Depok



Powder Plant Jebekoko, Gresik



Tirtamas Cold Storage, Krian



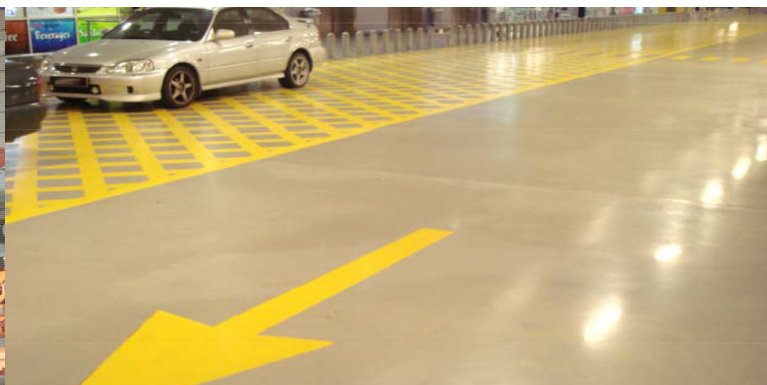
Sg. Besi Construction & Engineering Sdn Bhd, Cyber Valley, Daerah Sepang

IKEA Batu Kawan, Penang



Pali PTP Sdn Bhd, Pelabuhan Tanjung Pelepas, Johor

Mapei Malaysia Sdn Bhd, Pekan Nilai, Negeri Sembilan



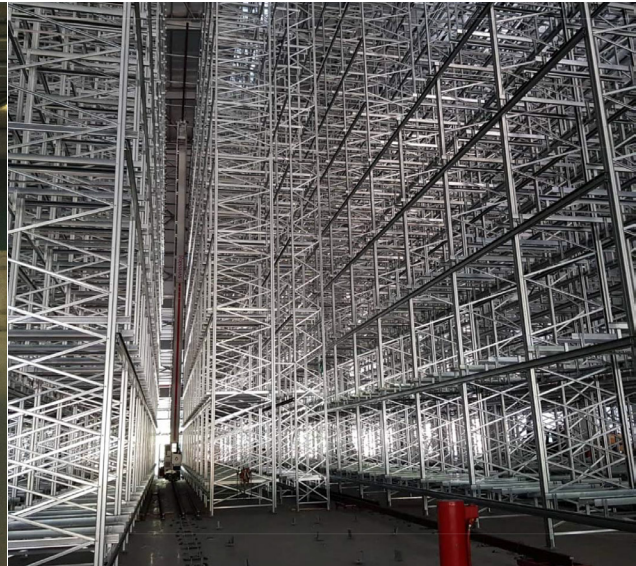
KLIA, Selangor

IKEA Cochrane, Cheras

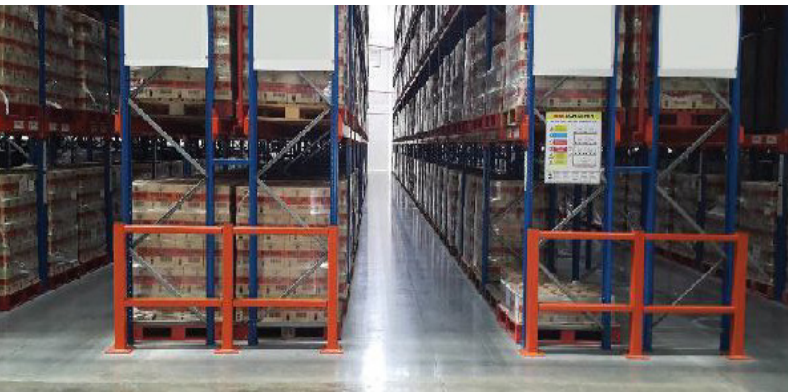
# INTERNATIONAL PROJECT REFERENCES



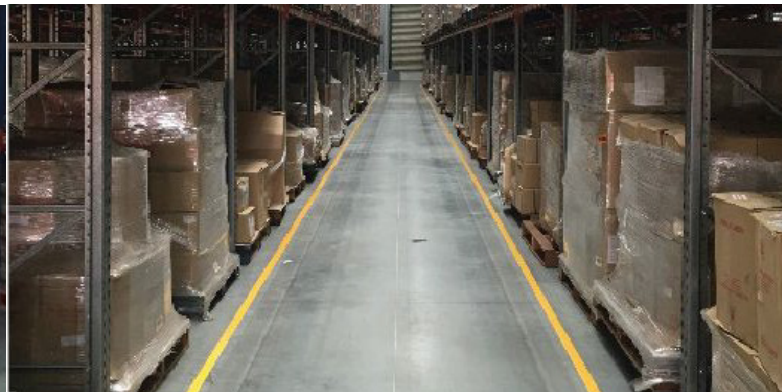
IKEA Mutiara Damansara



Chuan Sin Sdn Bhd, Taiping, Perak



SFI Food Sdn Bhd, Taiping, Perak



Shoon Fatt Biscuit & Confectionery Factory Sdn Bhd,  
Teluk Intan, Perak



Sk Indah Sdn Bhd, Petrajaya, Kuching



PALI PTP Sdn Bhd, Pelabuhan Tanjung Pelepas, Johor

# INTERNATIONAL PROJECT REFERENCES



FreightMark, Shah Alam (ZACKEA Natural)



IKEA Car Park, Singapore



H2C Warehouse, Qatar



Grandeur Warehouse



P&G, Ho Chi Minh

# LIST OF COMPLETED INTERNATIONAL PROJECT

## QATAR

- 2010 - H2C Building. Superflat, 30,000 m2

## INDIA

- 2010 - CARREFOUR India. SR2, 13,000 m2

## VIETNAM

- 2008 - INTEL Warehouse, Ho Chi Minh. SR2, 4,000 m2
- 2010 - 3rd PROCTER & GAMBLE Factory for Indochina Limited VSIP 24. SR2, 11,000 mm2

## THAILAND

- 2006 - WESTERN DIGITAL Factory, Thailand. SR3, 15,000 m2
- 2008 - National Convention Centre, Bangkok. SR3, 1,000 m2
- 2013 - UNILEVER D.C.2, Bangkok. ZACKEA, 50,000 m2

## SINGAPORE

- 2003 - EDELWEISS Condominium Car Park, Singapore. SR2, 26,000 m2
- 2005 - GLS Warehouse, Singapore. FM2, 12,000 m2
- 2006 - IKEA Car Park & Shopping Area, Singapore. SR2, 35,000 m2  
- Tobacco Factory, Singapore. SR2, 9,000 m2
- 2010 - ROLLS-ROYCE FoF & Hub. Superflat, 13,000 m2

## Pulau Pinang

- 2000 - MSAS Logistic Warehouse, Penang. SR1, 30,000 m2
- 2004 - PRIORITY Sdn Bhd Warehouse, Penang. SR1, 3,177 m2
- 2006 - CMT Factory, Penang. Burnish Superflat, 5,000 m2  
- JP Printer, Bukit Minyak, Penang. SR2, 10,000 m2
- 2007 - SANKYU (M) Sdn Bhd Warehouse. SR2, 4,500 m2  
- SIMLETECH Electronics Sdn Bhd Warehouse SR1, 5,000 m2
- 2013 - BARKATH CO-RO Manufacturing Facility, Butterworth. SR3, 2,023 m2
- 2020 - LAM Research warehouse - 50,000 m2
- 2021 - JABIL Circuit warehouse - 30,000 m2
- 2021 - SIMM Tech factory - 44,000 m2

## Kedah

- 2001 - Sungai Petani Hospital. SR2, 50,000 m2
- 2005 - INTEL Factory at Kulim Hitech, Kedah. SR2, 8,600 m2
- 2006 - Hospital Alor Setar, Kedah. SR2, 52,000 m2  
- INFINEON Power Fab Factory, Kulim. SR2, 29,854 m2
- 2008 - TESCO Mergong, Alor Setar. SR3, 23,000 m2
- 2016 - UGL Limited factory - 48,000 m2
- 2016 - Axis-REIT warehouse Banting - 45,000 m2



## Perak

- 2002 - UPSI, Tanjung Malim. SR 2, 30,000 m<sup>2</sup>  
- PROTON City Factory. SR 2, 105,000 m<sup>2</sup>
- 2012 - GUINEA Foods Warehouse, Taiping. ZACKEA, 5,384 m<sup>2</sup>

## Kuala Lumpur

- 2006 - AEON Jusco, Kepong. SR2, 12,000 m<sup>2</sup>  
- SMART Tunnel, KL. ZACKPAVE, 100,000 m<sup>2</sup>
- 2008 - Ampang Hilir Condominium, Ampang. ZACKEA, 2,732 m<sup>2</sup>
- 2009 - PAVILION Bus Parking & Loading Area. ZACKEA, 9,500 m<sup>2</sup>  
- KLGCC Mont Kiar. ZACKEA, 3,500 m<sup>2</sup>  
- JKR Store, Jalan Chen Sow Lin. SR2, 1,270 m<sup>2</sup>
- 2010 - TESCO, Jalan Klang Lama. SR2, 28,000 m<sup>2</sup>
- 2011 - BIG Supermarket, Solaris Dutamas. ZACKEA + HX, 1,152 m<sup>2</sup>  
- Intan Permata, TTDI. ZPS, 6,000 m<sup>2</sup>
- 2012 - Menara HUP SENG, KL. SR2, 14,862 m<sup>2</sup>  
- VOLVO Showroom, Jalan Chan Sow Lin. ZACKEA 1 HX, 1,152 m<sup>2</sup>  
- BMW Showroom, Segambut. 1,200 m<sup>2</sup>  
- TOYOTA, Setapak. ZPS, 1,500 m<sup>2</sup>  
- BESRAYA EASTERN, Plaza Toll Loke Yew. ZACK PAVE, 17,500 m<sup>2</sup>  
- 3 Block Office at Lot 1810, Jalan Klang Lama. ZPS, 33,542 m<sup>2</sup>
- 2013 - Pantai Hospital at Jalan Bukit Partai, SR2, 35,165 m<sup>2</sup>  
- KLSENTRAL Basement Car Park. ZACKEA + HX, 5,744 m<sup>2</sup>
- 2018 - Area Ventures warehouse - 90,000 m<sup>2</sup>

## Negeri Sembilan

- 2007 - BESIKRAFT Warehouse. \$22, 4,000 m<sup>2</sup>
- 2010 - TESCO Car Park Seremban. SR2, 12,552 m<sup>2</sup>
- 2012 - AKASHI KIKAL Malaysia Factory, Mukim Labu. ZACKEA, 12,089 m<sup>2</sup>
- 2020 - Ajinomoto warehouse - 16,000 m<sup>2</sup>
- 2020 - Kellogg Asia Products warehouse - 5,000 m<sup>2</sup>

## Melaka

- 2006 - GIANT, Melaka. SR3, 11,000 m<sup>2</sup>
- 2009 - CTRM, Melaka. SR2, 9,000 m<sup>2</sup>

## Johor

- 2007 - CENTURY TOTAL Logistic Warehouse D16 & D18 at Tanjung Pelepas. SR2, 17,928 m<sup>2</sup>
- 2008 - SENAI Airport, Airside Infrastructure. ZACK PAVE, 41,680 m<sup>2</sup>  
- CENTURY TOTAL Logistic Warehouse D12 at Tanjung Pelepas. R2, 15,600 m<sup>2</sup>
- 2013 - Biopharmaceutical Manufacturing Facility, Package C15A at Nusajaya, Johor. ZACKEA, 19,225 m<sup>2</sup>
- 2017 - Pan Asia Logistics warehouse - 50,000 m<sup>2</sup>
- 2018 - Pan Asia Logistics warehouse - SFRC floor - 100,000 m<sup>2</sup>
- 2019 - Knauf insulation warehouse - 18,480 m<sup>2</sup>
- 2021 - Ikano Johor - 44,000 m<sup>2</sup>
- 2021 - Tiong Nam Logistics warehouse - SFRC floor - 100,000 m<sup>2</sup>

# LIST OF COMPLETED INTERNATIONAL PROJECT

## Selangor

- 1998 - NESTLE Distribution Centre, Klang. SR2, 45,000 m2
- 2001 - Malaysian Institute Aviation Technology (MIAT), Sepang. SR1, 50,000 m2
- 2002 - WESTERN DIGITAL, Sungai Way. SR2, 20,000 m2
- 2003 - IKEA Car Park, Mutiara Damansara. SR2, 65,000 m2
- 2004 - SITT TATT Factory, Bukit Raja, Klang. SR2, 10,000 m2  
- FLEXTRONIC Factory, Shah Alam. SR2, 18,000 m2
- 2006 - Sentosa Kajang Hospital. SR2, 7,000 m2  
- Laksamana Puri Condominium, Batu Caves Burnished Floor, 10,000 m2  
- LCCT Apron. ZACKPAVE, 53,000 m2  
- MYDIN Warehouse, USJ. SR2, 20,000 m2  
- FREIGHT MARK Warehouse, Shah Alam. SR2, 21,000 m2  
- JAYA JUSCO, Balakong, SR3, 10,000 m2  
- GRANDEUR Warehouse, North Port. SR2, 7,000 m2
- 2007 - GIANT Warehouse, Kinrara, Puchong. SR3, 17,000 m2  
- KLIA Aircraft Workshop & Hanger. ZACKEA, 15,000 m2  
- SACC Warehouse, Shah Alam. SR3, 9,000 m2  
- TAMCO Warehouse, Bukit Raja. SR3, 3,500 m2
- 2008 - GIANT Warehouse, Kota Damansara. SR2, 16,000 m2  
- GIANT Warehouse, Putra Height. SR3, 6,400 m2
- 2009 - GIANT D.C. , Salak Tinggi. SR1, 56,000 m2  
- CITTA Mall, Ara Damansara. Moderate Floor, 43,000 m2
- 2010 - Wisma SHELL Car Park, Cyberjaya. ZPS, 20,000 m2
- 2011 - AF 02, KLIA 2, Sepang. ZACKPAVE, 15,200 m2  
- SHELL Station, KIA. ZACKEA, 2,000 m2  
- TESCO, Kelana Jaya. ZACKEA + HX, 1,643 m2  
- IKEA Warehouse Shah Alam. Harden X, 12,000 m2
- 2012 - Subang Airport Warehouse. ZACKEA + HX, 6,000 m2  
- Malaysia International Aerospace Centre (MIAC), Subang. ZACKPAVE, 4,000 m2  
- SHELL Station, Besraya Highway. ZACKEA, 2,300 m2  
- 101 Putrajaya. ZACKEA, 65,739 m2  
- AFO1, KLIA 2. ZACKPAVE, 74,033 m2  
- SHELL Station, Mukim Hulu Langat. ZACKEA, 2,500 m2
- 2013 - CITY-LINK Warehouse, Bandsr Saujana Putra. ZACKEA, 16,434 m2  
- MRT Station, Sungai Buloh. ZACKEA, 19,914 m2  
- MADGE MANSION Condominium Cheras, Hulu Langat. ZACKEA, 12,415 m2  
- GOLD COLD Factory at Taman Berjaya Park, Shah Alam. Harden X, 3,602 m2
- 2017 - Lam Soon Edible Oil warehouse - 24,000 m2
- 2018 - Prasarana LRT depot - 30,000m2
- 2019 - IOI City mall multi-level carpark - 380,000 m2
- 2019 - IKEA warehouse - 90,000 m2
- 2019 - DAIKIN warehouse - 26,000 m2
- 2019 - Malaysia Airport Sepang Runway pavement @ KLIA2 - 50,000 m2
- 2020 - Northport Distripark warehouse-SFRC floor - 33,000 m2
- 2020 - Vital Healthcare warehouse - 40,000 m2
- 2020 - Havi Logistic warehouse - 12,000 m2
- 2021 - Maple Tree warehouse - 122,000 m2
- 2022 - LF Logistics warehouse - 180,000 m2
- 2022 - Shopee warehouse - 78,000 m2

## Sarawak

- 2008 - MERDEKA MALL Car Park, Miri, SR2, 7,600 m2  
- Borneo Convention Centre Kuching. ZACKEA, 12,000 m2

## Business Alliances Countries:



**Member of:**  
American Concrete Institute (ACI)  
Kuala Lumpur



[www.acikl.com](http://www.acikl.com)

For more information, kindly contact:

**PT ZACKLIM SUPERFLAT INDONESIA**

a. Mayjend Sungkono 91E, Kompleks Ruko DBS  
Bank Surabaya, 60226, Indonesia

p. +62 852-2832-6350 e. [Indo.project01@zacklim.com](mailto:Indo.project01@zacklim.com)  
[www.zacklim.com](http://www.zacklim.com)